



# ***Maxi-TRI~~X~~***



**Firestone**



# Maxi-TRI X

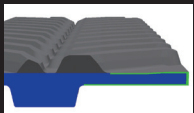
Facing today's ever-evolving agricultural practices means being able to adapt your field equipment each and every season. That's why we developed new track technologies and rubber durability to do just that. Introducing Maxi-TRI X™ – engineered for optimal performance that meets the demands of high-horsepower farm equipment while minimizing the impact on a vast array of soil conditions. They're tracks as agile as you have to be.

## Maxi-TRI X RUBBER TRACK SPECIFICATION FOR CASE IH TRACTORS

Track Sizes	Material ID #	Model Series	Track Width (in)	Tread Bars Qty	Tread Height (in)	Tread Pitch (in)	Drive Lug Qty	Carcass Plies	Main Cable Size (mm)	Carcass Thickness (mm)	Carcass Edge Thickness
ALLTRAC CLS5 32X42 ST	013572	Case IH Quadtrac®	32	84	1.97	6.00	42	3	4.5	35	38

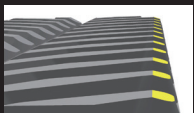
※ For AG STANDARD DUTY

## TRACK FEATURE



### ■ Pro-Edge design

For a thick edge optimized to help avoid stress and damage



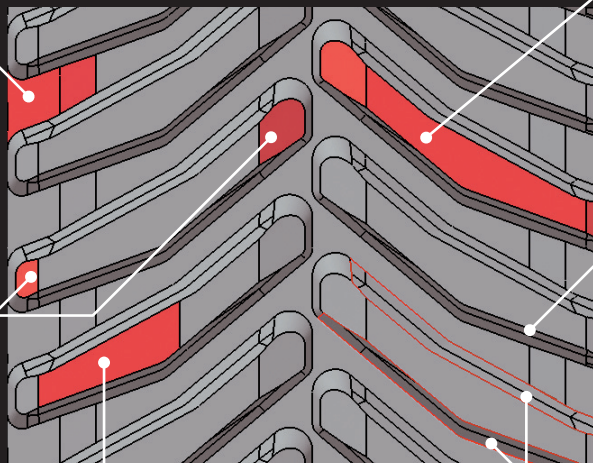
### ■ Tread chamfers

Promote less ground disturbance



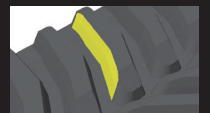
### ■ Wide-under-roller tread bar

Minimize soil compaction



### ■ 32-inch wide tread surface

Maximize the tread wear life and minimize soil compaction



### ■ Double-angled tread bar

Helps promote mud clean-out



### ■ Asymmetrical tread wall

Optimized to promote mud lift-up and better traction